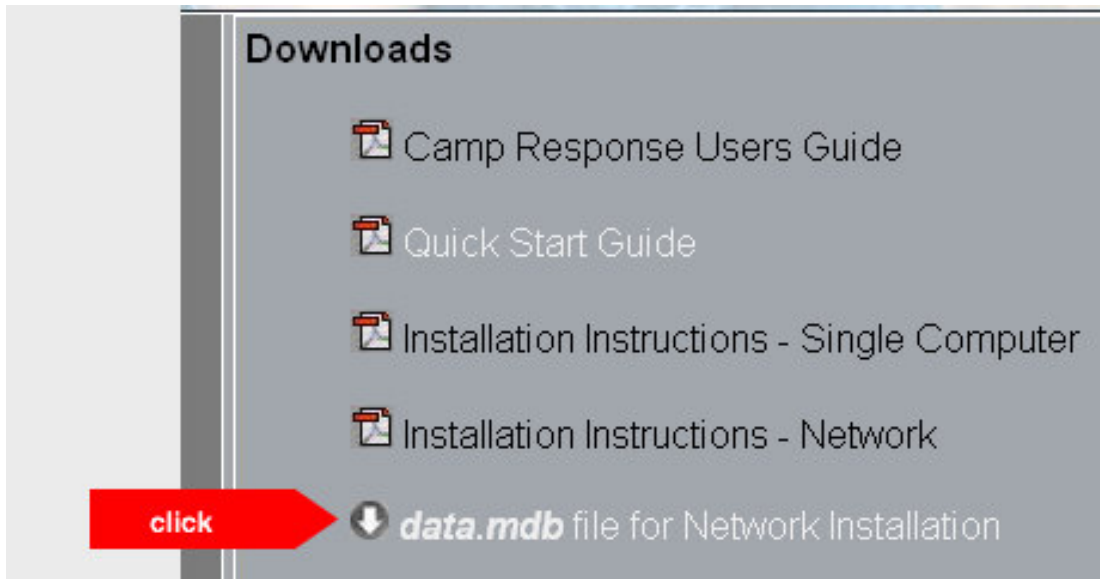


Camp Response – Installation Instructions

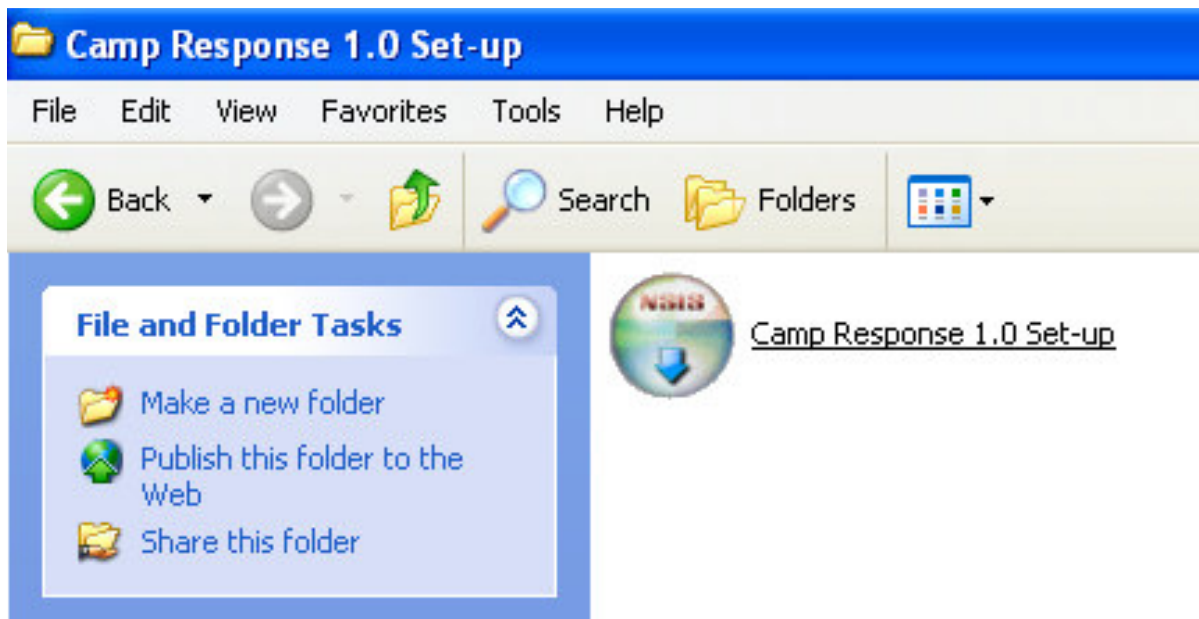
Welcome to Camp Response! It is our hope that this software will improve your camp's health and safety efforts. These instructions will give you information on how to install Camp Response on a network or a single computer. If you need more detailed instructions, please refer to your Users Manual or visit www.CampResponse.com/support for additional help. (Support is not available to demo users)

Network Installation

1) Download and copy the "data.mdb" file to any Shared Folder on your network with read/write access to all users. This file can be downloaded at www.CampResponse.com/support. **Do not change the name of the "data.mdb" file!** If the file name is changed, Camp Response will not function properly.



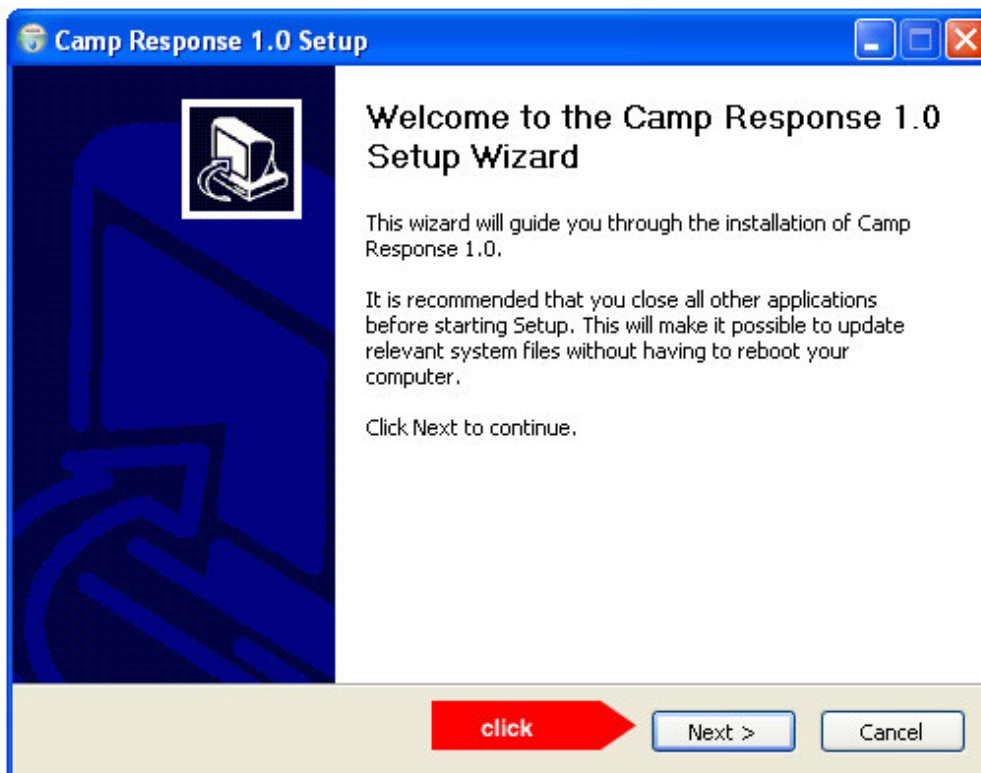
2.) Locate and click the Camp Response Set-up file.



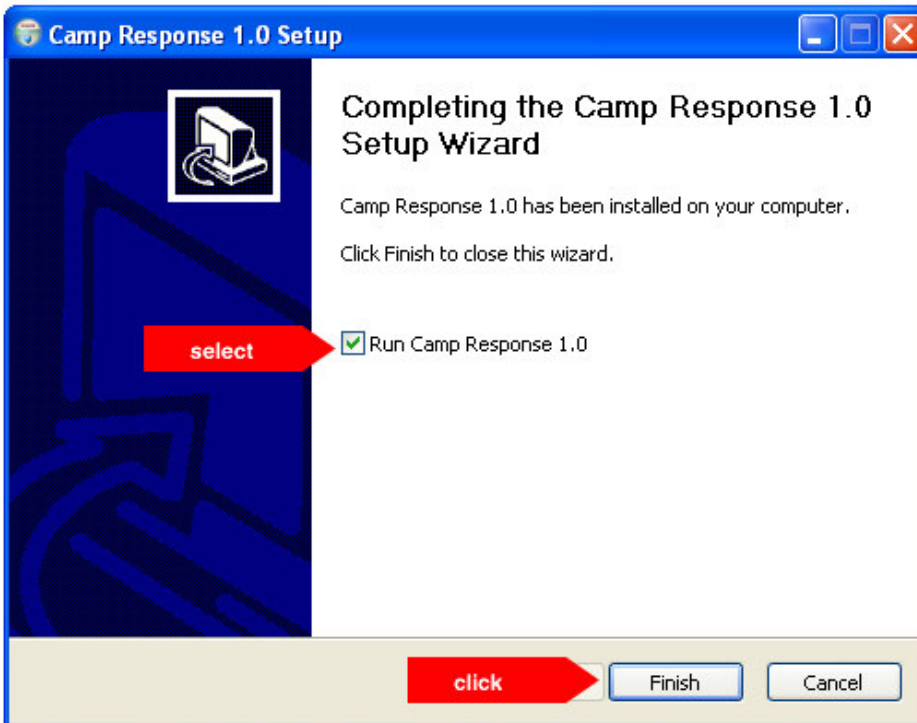
3.) Click "Run" to proceed with Installation. (Your computer may skip this step.)



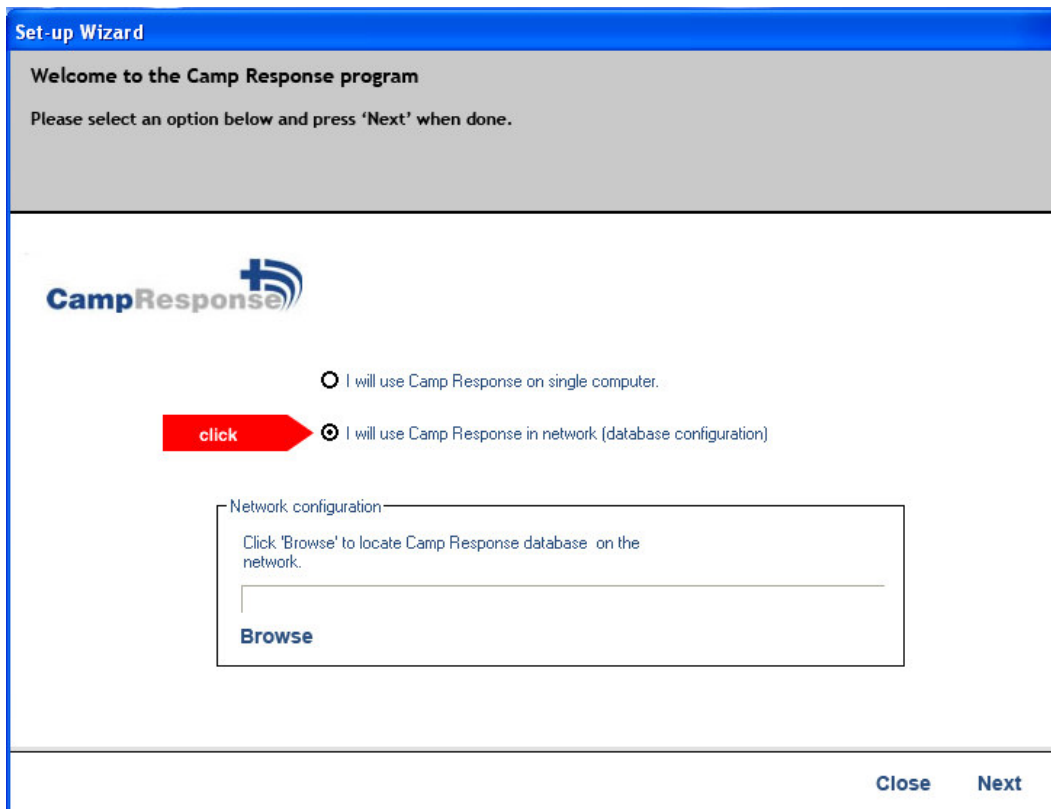
4.) Click "Next" to follow set-up wizard.



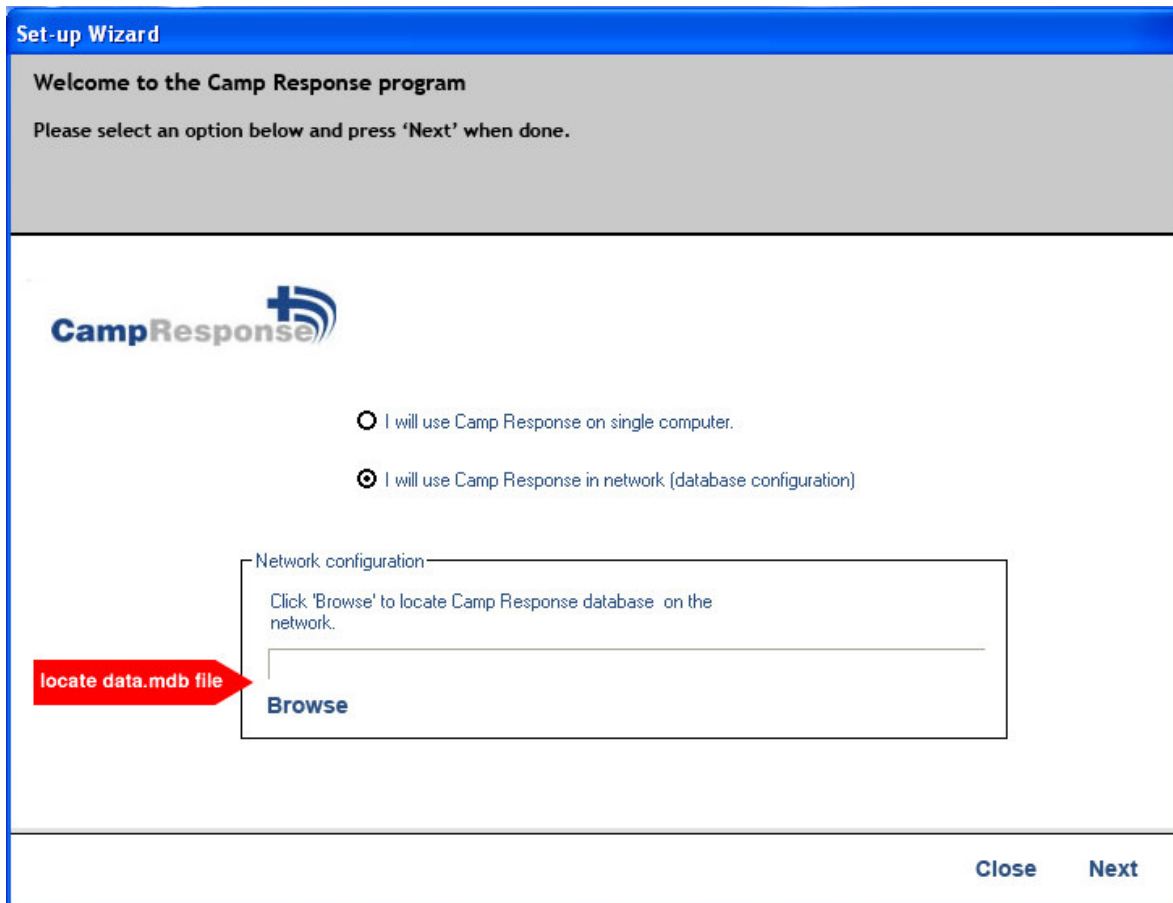
5.) Select "Run Camp Response 1.0" and click "Finish."



6.) Start the Camp Response set-up file. On Set-up Wizard page 1 choose option 'I will use Camp Response in network (database configuration)'.



7.) In the Network configuration section, click "browse" and locate file 'data.mdb' on the network.



8) Press 'Next' and follow instructions on the screen to end of Set-up process.

9) Repeat steps 1-8 to install Camp Response on all workstations that you have registered.

Note:

-the "data.mdb" file is the file that contains all of the data you enter into Camp Response. The file name cannot be changed and it must be in a shared folder with full read and write permission.

Additional installation help can be found at www.CampResponse.com/support