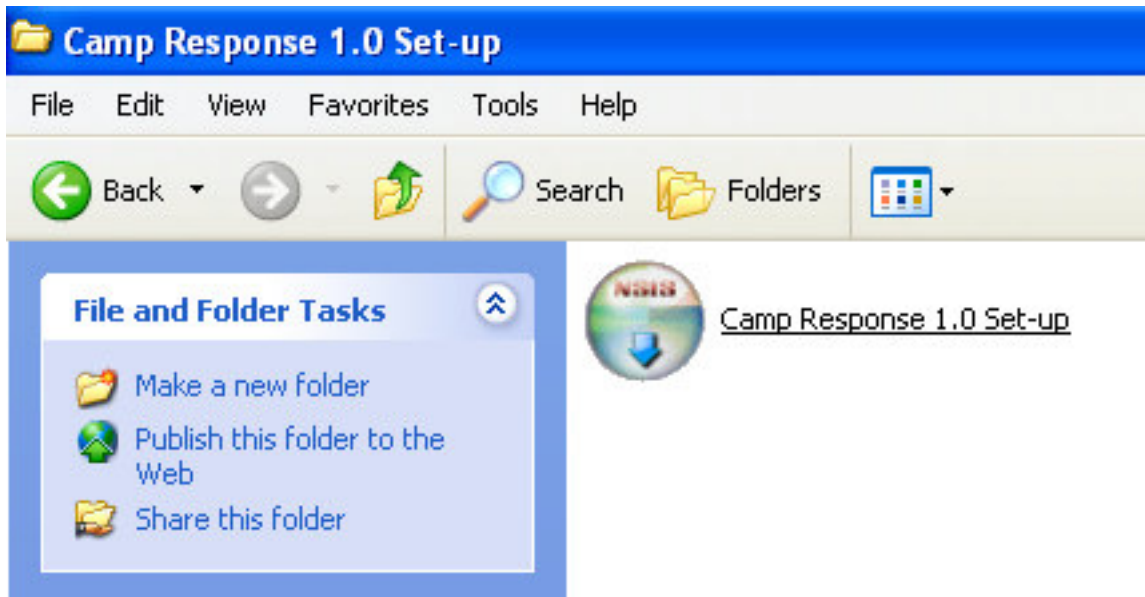


# Camp Response – Installation Instructions

Welcome to Camp Response! It is our hope that this software will improve your camp's health and safety efforts. These instructions will give you information on how to install Camp Response on a network or a single computer. If you need more detailed instructions, please refer to your Users Manual or visit [www.CampResponse.com/support](http://www.CampResponse.com/support) for additional help. (Support is not available to demo users)

## Single Computer Installation

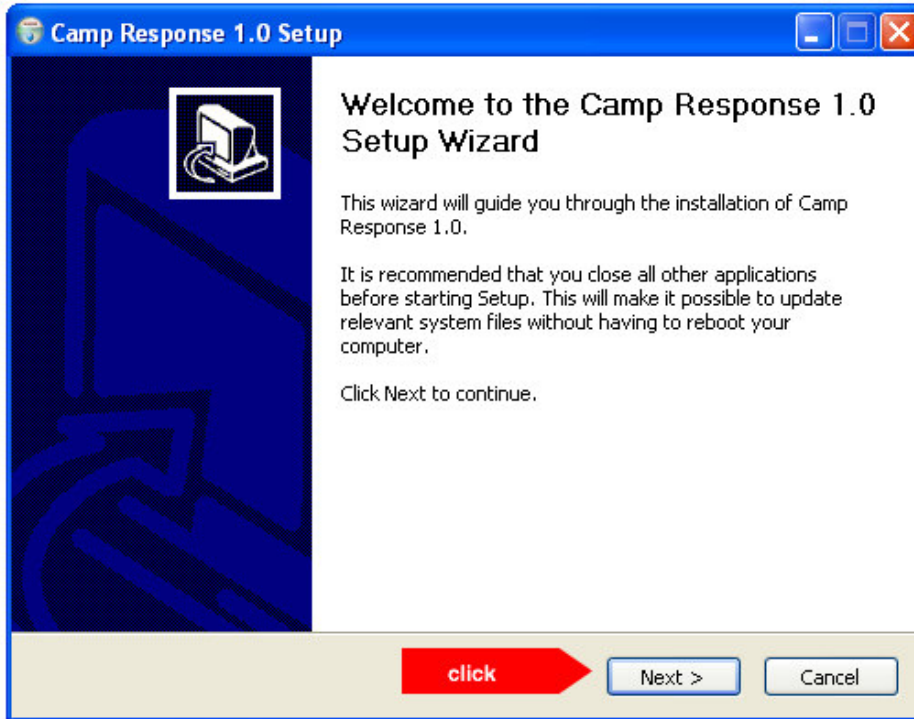
1.) Locate and click the Camp Response Set-up file.



2.) Click "run" to proceed with Installation. (Your computer may skip this step.)



3.) Click "Next" to follow set-up wizard.



4.) Select "Run Camp Response 1.0" and click "Finish."

